



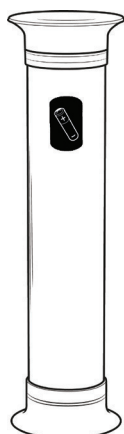
C-THRU™ 5Q/10Q/15Q

RECYCLING BIN

OPERATING INSTRUCTIONS

IMPORTANT NOTE: ENSURE THAT ALL RELEVANT PERSONNEL READ THESE INSTRUCTIONS PRIOR TO USE

Glasdon recommends that the unit is emptied frequently. Certain types of battery waste are classed as hazardous / special waste and so must be disposed of within a 12 month period (maximum).



CONTENTS:

x1 C-Thru Bin

OPTIONAL:

x1 'full' Indicator Decal

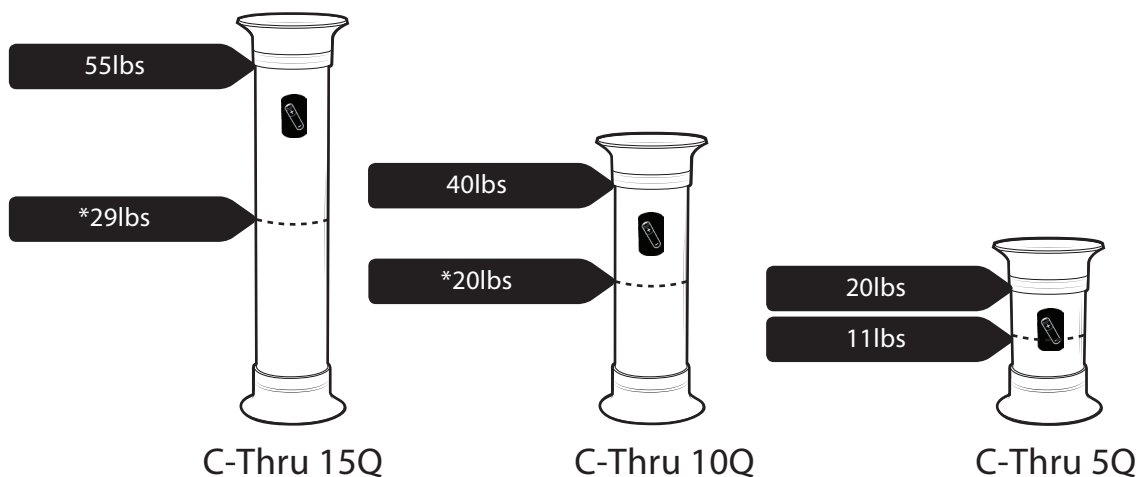


WEIGHT GUIDE

The optional 'full' decal should be fitted on to the body to mark the maximum recommended lifting / carrying weight for operatives. When the level of waste reaches this level the bin should be emptied immediately.

PLEASE REVIEW YOUR COMPANY'S MANUAL HANDLING POLICY TO DETERMINE THIS BEFORE FITTING.

The guide below shows the approximate weights of the bins when filled to their mid-point and top. The guide should be used as an estimate, as the weight of different waste types varies.

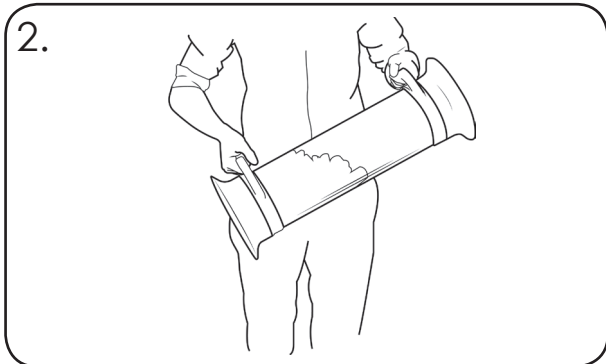


* Glasdon recommends that the C-Thru 15Q and C-Thru 10Q are not filled beyond the mid-point of the body to improve handling and extend the lifetime of the product.

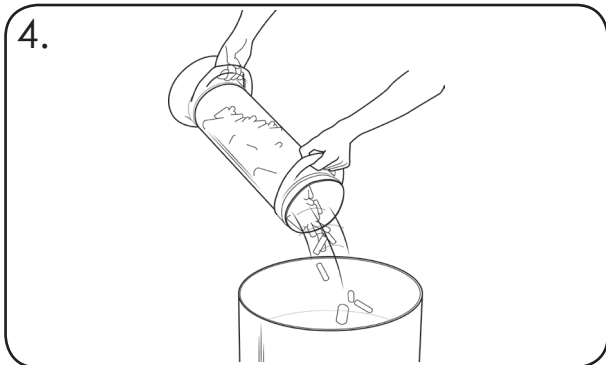
OPERATING INSTRUCTIONS



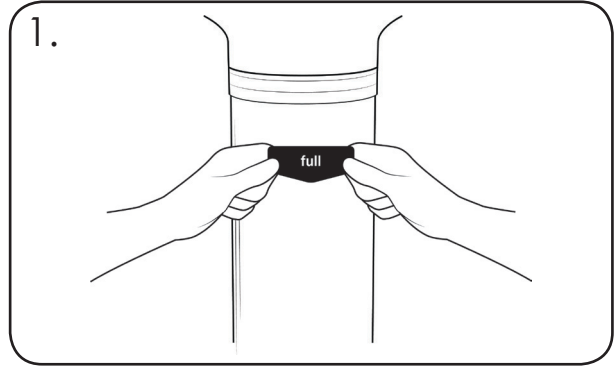
ATTENTION: If the unit is filled to capacity it may exceed your company's safe Manual Handling lifting guidelines. Ensure the 'full' decal is appropriately located on the product and that operatives are aware of their lifting limitations prior to use.



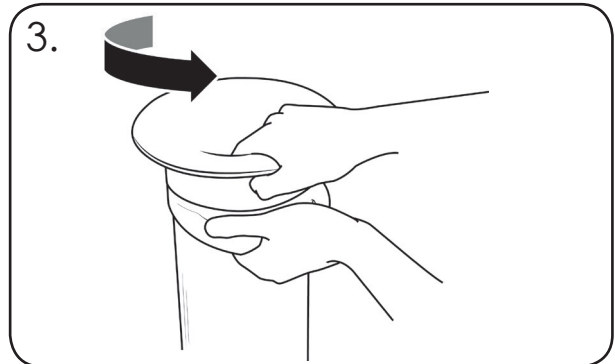
2. When lifting the bin, use both handles with a good lifting technique. Carry the bin with both handles as shown.



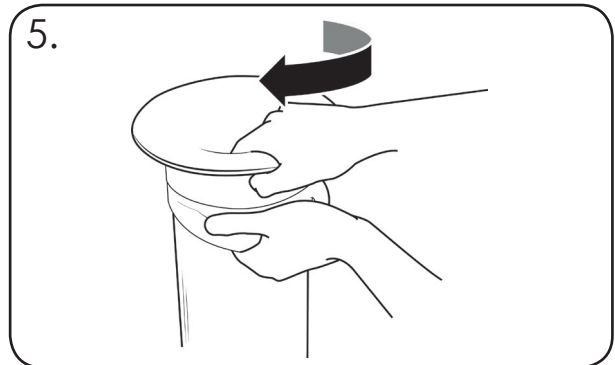
4. Empty the contents of the bin following your company's (hazardous) waste procedure into a suitable container.



1. Fit the 'full' decal (if applicable). Remove the adhesive backing from the decal and apply the decal to the polycarbonate body in a suitable visible location (please refer to 'weight guide').




3. To remove the lid for emptying unscrew counter-clockwise and lift off.



5. To reattach the lid turn it clockwise until tight.

IMPORTANT NOTE: PLEASE ENSURE THAT ALL RELEVANT PERSONNEL READ THE POINTS LISTED WITHIN THIS LEAFLET AND THAT A COPY IS GIVEN TO STAFF INVOLVED WITH THE MAINTENANCE OF THIS PRODUCT.

- A planned maintenance schedule of regular inspection is recommended, replacing components as necessary.
- Replacement components are available direct from GLASDON, Inc.
- GLASDON, Inc. cannot be held responsible for claims arising from incorrect installation, unauthorized modifications or misuse of the product.

 **Glasdon** AND C-THRU ARE TRADEMARKS OF GLASDON GROUP OR ITS SUBSIDIARIES IN THE U.K. AND OTHER COUNTRIES

Issue 1 November 2015 C000/0482 US

©Copyright 02/2016

Glasdon reserve the right to alter specifications without prior notice. ED

 **Glasdon**

Glasdon, Inc.

5200D Anthony Road
Sandston
VA 23150

Sales Inquiries: 1-855-USGLASDON

General Inquiries: 804-726-3777

Fax: 804-726-3778

E-mail: info@glasdon.com

Web: www.glasdon.com